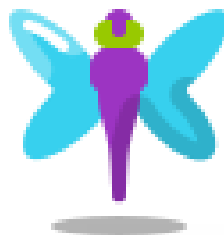


Dragonfly



Cup

SATURDAY, APRIL 5, 2025

@ THORNTON CREEK ELEMENTARY

7712 40TH AVE NE, SEATTLE, WA 98115



FORMAT

A 5-Round G/25; +5 Swiss in five sections:

Kindergarten

1-3 U700

4-6 U800

1-3 Open

4-6 Open

Sections may be combined depending on attendance. Players in lower grades are welcome to play in higher grade sections.

SCHEDULE

Rd. 1 – 9:00am

Rd. 2 – 10:15am

Rd. 3 – 11:30am

Lunch

Rd. 4 – 1:15pm

Rd. 5 – 2:30pm

Awards Ceremony ~ 4pm

Kindergarten will run separately on its own faster schedule, with the next round starting soon after the last game finishes.

ENTRY FEE

\$35 by 3/29, \$45 after. Room for 200 players.

Please register early to reserve your spot!

AWARDS

Generous trophies awarded to the top-scoring players in each section. Trophies to the top 5 finishing teams (top 5 scores from same school comprise team score) across all sections. Medals for first-timers who do not earn a trophy.

RATING

NWSRS rated. Open sections also US Chess rated. Higher of current NWSRS or April US Chess regular rating will be used to determine section and pairings.

ELIGIBILITY

Open to all students in grades K-6 as of the 2024-25 school year. Out-of-state players welcome!

REGISTRATION

Register online at [Chessreg.com/](https://chessreg.com/)
Pay by Credit/Debit/PayPal. 100% preregistered, no on-site entries or payments. **Entry + payment deadline April 4 @ 5:00pm.** No registrations accepted or refunds offered after the deadline.

WA State Elementary Qualifier!

CLOCKS

Clocks will not be used from the start in the Kindergarten, 1-3 U700, and 4-6 U800 sections, but will be placed in unfinished games after 35 minutes of play and set to G/10; +5. Chess clocks and notation required in Open sections and used from the start. All equipment is provided.

CONCESSIONS

Pizza lunch available for pre-order, with limited slices available for purchase on-site. Please preorder via the registration website! Other refreshments available for purchase on-site.

QUESTIONS?

Registration: Ben Radin - ben@chessreg.com
Coach Ray Easterday - chessape@outlook.com
Chief TD: Josh Sinanan - joshsinanan@gmail.com